

Michiana Gem & Mineral Society
Jason Hefner, Editor
229 East State St
Etna Green, IN 46524



May 2018

Volume 58 Number 5

Time to be out
collecting. Wear your
safety glasses and
other PPE!

**THE
ROCKFINDER**

We're on the Web! See us at: www.MichianaGMS.org

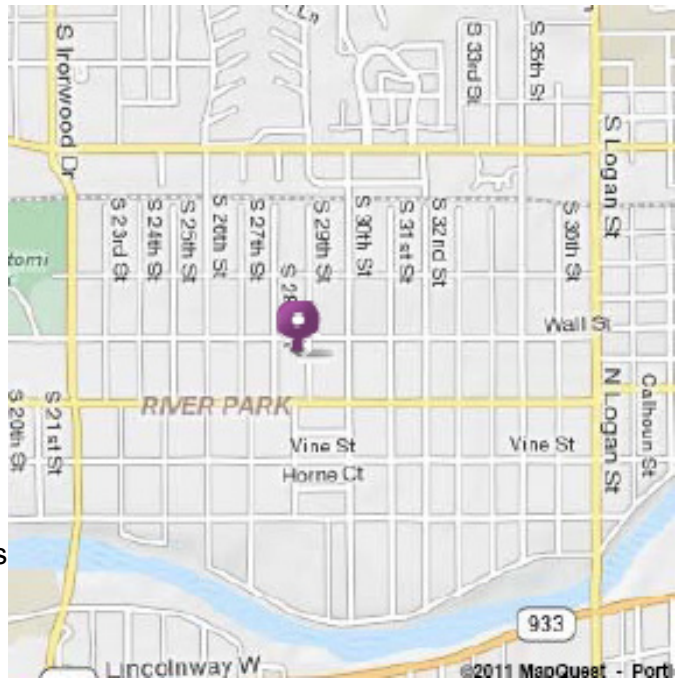
The purpose of the Michiana Gem & Mineral Society is to promote the study and enjoyment of the earth sciences and the lapidary arts, and to share lapidary knowledge and techniques. General meetings are usually held the fourth Sunday of each month at 2:00 p.m. at,

Our Redeemer Lutheran Church
805 S. 29th St.,
South Bend, IN.
Please see the map to the right.

Doors usually open at 1:30 for meet & greet time.

Regular meeting exceptions include May (third Sunday), July (Club Picnic), August (Club Show) and the November/December meeting and Christmas party.

Board meetings are held before the monthly meetings. The annual club show is in late August.



DUES

Yearly Membership Dues are payable by December 15th of each year. Please choose type of membership below.

- Individual \$15.00 Family \$20.00
- Junior \$1.00 Subscriber \$7.50

Please indicate areas of special interest.

- General Geology Gems & Minerals
- Fossils Micro mounts
- Crystals Field Trips
- Cabochons Faceting
- Carving Beads
- Jewelry Making

Name(s) _____
 Street _____
 City, ST, Zip _____
 Phone(s) _____
 Email _____

Please send your dues and the bottom half of this form to:



Please read and sign this section

With my signature I hereby release the Michiana Gem and Mineral Society, Inc., and its individual members and the owners of any premises upon which I enter under permit granted to the society, absolutely free of any liability whatsoever, to my person or property, and further I will respect the equipment and property of the aforesaid owners.

Signed _____ Date _____
 Signed _____ Date _____

Family Information:

Name: _____ Birthday: _____
 Name: _____ Birthday: _____
 Name: _____ Birthday: _____
 Name: _____ Birthday: _____
 Name: _____ Birthday: _____

Michiana Gem & Mineral Society
 c/o Nancy Foreman
 58456 Kimberly Ct.
 South Bend, IN 46619

THE ROCKFINDER

Volume 58 Number 5
May 2018

The purpose of the Michiana Gem & Mineral Society is to promote the study and enjoyment of the earth sciences and the lapidary arts, and to share lapidary knowledge and techniques.

Michiana Gem and Mineral Society
www.MichianaGMS.org, is a not-for-profit organization affiliated with the Midwest Federation of Mineralogical Societies <http://www.amfed.org/mwff/> and with the American Federation of Mineralogical Societies www.amfed.org

The *Rockfinder* is published monthly except July and August.

Please note that all items for a given issue of the *Rockfinder* are due to the **Editor** no later than the **5th** day of the previous month. This means that the due date for the March Issue will be February 5th. Advance items are appreciated. Material may be e-mailed to hefner_family@hotmail.com or submitted via the U.S. Mail.

Editor:
Jason Hefner
229 East State St
Etna Green, IN 46524

Permission is hereby granted to reprint any original *Rockfinder* articles as long as recognition is given along with the reprint.

REMEMBER – Items in The Rockfinder that are **BLUE & UNDERLINED** are links to the internet or email addresses. Just click on them for more information.



The Red Cloud Mine, Martinez Lake, La Paz Co., Arizona

by Jim Daly, Member

While in Arizona for my grandson's wedding, I had the opportunity to do some mineral collecting for two days. My friend Phil Smith picked me up from my daughter's house in Mesa, Arizona on March 29, and we drove to Miami and Florence, AZ to look for some mines in those areas. It turned out to be a waste of time since we couldn't find any of them. We went to Phil's house in Goodyear for the night since we would be going West in the morning. We left Goodyear early the next morning and drove to Quartzsite, where we met Bob Wolf and his dog. Bob is a "snowbird", living in Minnesota in the Summer and Arizona in the Winter. Bob drove his own truck, and we followed in Phil's truck, since it's always safer to have two vehicles when way out in the desert.

From Quartzsite we drove 68 miles South on State Road 95 and turned right on Martinez Lake Road. After passing Martinez Lake we turned right on Red Cloud Mine Road. It isn't paved, or even regularly maintained. The road goes through part of the Imperial National Wildlife Refuge, and then the Yuma Proving Grounds.

Continued on Page 2

Up & Coming

Next Meeting: May 20, 2018.

Doors open at 1:30. Meeting starts at 2:00.

Place:

Our Redeemer Lutheran Church
(29th & Wall)
South Bend, IN. (This is in River Park)

Program:

Nature of Earth: Intro to Geology

Host & Hostesses:

Jim & Diane Kendig, Sherry Bowen, Nick & Jan Pellus, Carol Gargis, Betty Gearhart, A. Santewaa

Board of Directors

President: Bill Foreman
574-233-9178
Vice-President: Randy Hill
269-465-5814
Secretary Rachel Sutton
269-221-8366
Treasurer: Linda Cioch
219-363-5809
Liaison: Bob Bell
574-233-7352

Committee Chairs

Displays: Mike Skoczylas
574-251-0255
Editor: Jason Hefner
574-858-9837
Educational: Jesse Zeiger
574-259-5944
Facebook: Danielle Wilborn
574-344-3385
Field Trips:
Historian: Jim Daly
Hospitality:
Linda Miller 574-291-5027
Juniors:
Librarian:
Membership: Nancy Foreman
574-233-9178
Programs: Kathy Miller (Interim)
574-291-0332
Publicity: Josh Klosinski

Safety: Julie Wieger 574-291-2597
Jennifer Hefner 574-858-9837
Show Chair: Josh Klosinski
Sunshine: Annette Freil 574-293-8193,
Sherry Kobie 574-522-0189
Webmaster: Joe Perry 574-295-9050

Red Cloud Mine continued from page 1

While in the Proving Grounds there are signs not to leave the road due to the danger of unexploded ordnance. After 13 miles of this road we came to the Red Cloud Mine. We made a stop shortly before getting to the Red Cloud to check out another mine that Bob had heard of. This, we found later, was the Papago Mine. There's a steep narrow trail going up to it from the road, which I chose not to attempt. I explored along the road while Phil and Bob hiked up to the mine. They didn't find much, and only located one of the seven shafts.



Trail to the Papago Mine. Photo: Jim Daly.

At the Red Cloud we were greeted by Roger, the custodian/superintendent. He explained that the mine was owned by a gentleman in Topeka, Kansas, but he runs it. He has a small crew mining for specimens during the Winter and allows collecting on the dump for a fee. He also had some specimens for sale. He was quite helpful, and even walked the dump with us to help us spot the good material.

Continued on Page 3

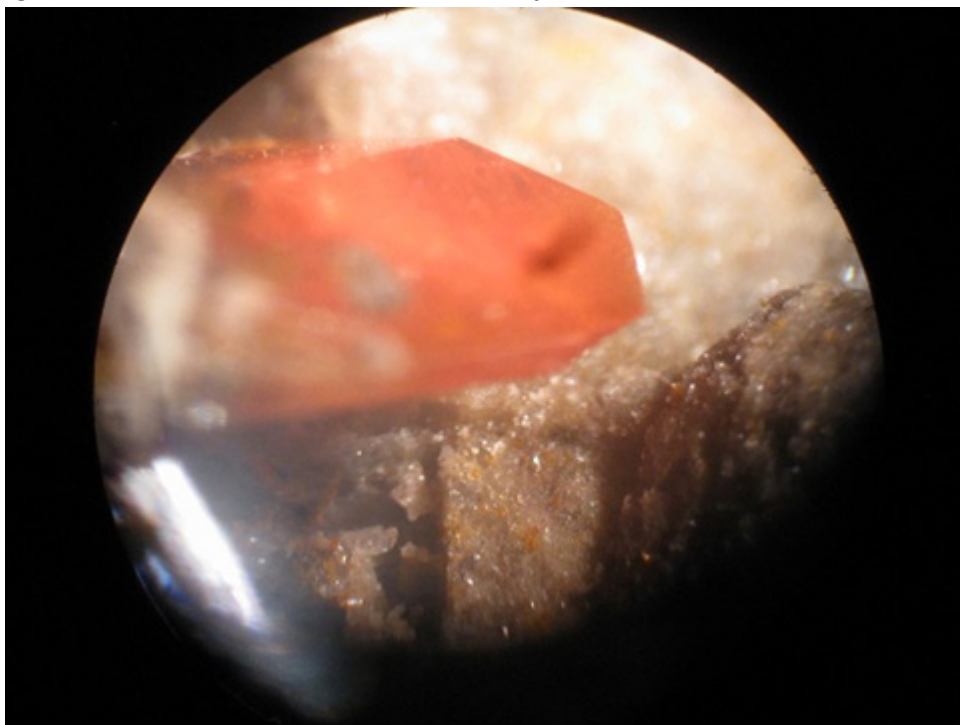
Red Cloud Mine continued from page 2



Bob, Phil and Roger at the Red Cloud. Photo: Jim Daly.

There wasn't a lot of good wulfenite on the dump because Roger had sent the miners home for the Summer a week or two ago, and there had been a group of collectors just a few hours before. He was planning to close the mine for the Summer in a week or so. I did get quite a bit of micro material, though, including willemite, vanadinite, quartz, mimetite and hematite.

Wulfenite from the Red Cloud Mine.
Photo; Jim Daly



Continued on Page 6

American Federation of Mineralogical Societies News

A Word from the President

by Sandy Fuller, President

excerpted from [AFMS Newsletter Volume 71, Number 5 - May 2018](#)

Have you thanked a volunteer today?

Each year, in mid-April, Americans and Canadians take time out of their busy schedules to recognize the tremendous contributions many by millions of volunteers from all walks of life and fields of interest. In our clubs, volunteers are essential to each and every club. From officers to greeters, and all the other tasks, large and small, volunteers create a sense of community and caring. In a healthy club, 100% of the members are also club volunteers. They help at club meetings and events by welcoming new and old, sharing skills, leading activities and providing critical behind the scenes support with newsletters, websites, shop maintenance and the myriad of tasks essential for group success. Volunteering is rewarding.

Research shows that volunteers are happier and healthier. In fact, the more a person volunteers the happier they are. In addition, skills developed through volunteering often help advance careers. Finally, volunteering is a great way to get to know people. Within our clubs we have people from all walks of life. Bound by our common passion, the camaraderie developed as we work together often transcends any differences and helps to build long lasting friendships. It's a win-win for everybody.

[Read the rest here](#)

Presidents Message

David Root, President □ [MWF News May 2018 -](#)

[Issue No. 572](#)

We will start off this month's festivities with a message from the MWF Webmaster: "When you send in date change/correction requests please include what month or state you are talking about. It makes things so much easier. Thank you."

Our MWF insurance has played a prominent role in my 2018 so far, and I've become aware that there is some confusion and misinformation out there. So I am going to bravely attempt to clear some of it up. The reason we need insurance is because the owners of field trip properties and show venues would be unlikely to allow us to use their facilities unless they knew we had insurance to protect them from potential liability. Of course individual clubs could purchase their own insurance, but I doubt they could get better rates than what the buying power of 108 clubs affords the MWF. And in case you wondered, a 501(c) organization can be sued, and it is possible that the officers of that organization could also be held liable. This is unlikely as long as those officers act as a reasonably prudent person acting in good faith would, following normal and usual practices. If a club failed to have insurance, it would be easy for a lawyer to argue that the board had failed to act in a "reasonably prudent" fashion, and individual board members could be included as defendants in the case.

[Read the rest here](#)



Purpose of the AFMS

To promote popular interest and education in the various Earth Sciences, and in particular the subjects of Geology, Mineralogy, Paleontology, Lapidary and other related subjects, and to sponsor and provide means of coordinating the work and efforts of all persons and groups interested therein; to sponsor and encourage the formation and international development of Societies and Regional Federations and by and through such means to strive toward greater international good will and fellowship.

www.amfed.org



Purpose of the MWF

To promote interest and education in geology, mineralogy, paleontology, archaeology and lapidary, and to sponsor and provide means of coordinating the work and efforts of groups interested in these fields.

www.amfed.org/mwf

Upcoming Club shows and events Items from mailings and various websites.

May 2018

19-20—SAINT JOSEPH, MICHIGAN: Annual show; Blossomland Gem & Mineral Society; Lake Michigan Catholic Elementary School, 3165 Washington Ave.; Sat. 9-6, Sun. 12-6; Free Admission; Nonprofit annual Gem, Mineral & Fossil Show, multiple vendors will have items for sale, including custom made jewelry, fossils, crystals, beading, rock & mineral specimens. Club members will do demonstrations such as: rock cutting, polishing, silversmithing and more.; contact Pam Kriegsmann, (630)-779-8258; Email: blossomlandrockclub@gmail.com

19-20—NORTH OLMSTED, OHIO: Show and sale; Parma Lapidary Club; Soccer Sportsplex, 31515 Lorain Ave.; Sat. 9-6, Sun. 10-5; Admission \$6; We are celebrating our 50th Show! As usual, there will be a variety of vendors with beautiful slabs, gems, minerals, jewelry and much more. The Geode Crackers will be back as will the Fossil Club who will identify your fossils for FREE. We will have demonstrations, a kids' corner, silent/Chinese auctions, and exhibits. ; contact Holly Zewalk, (440)-779-6543; Website: parmalapidary.org

26-27—ST. CHARLES, ILLINOIS: Annual show; CGMA (Chicagoland Gems & Minerals Association; Kane County Fairgrounds, 525 S. Randall Road; Sat. 10-6, Sun. 10-5; Admission \$5, Students/Seniors \$3, Children under 13 free; Galaxy of Gems: CGMA (Chicagoland Gems & Minerals Association) 42nd Annual Show. Dealers, special exhibits, demonstrations, kids kornor, door prizes, and more. Two-day passes available. Active service personnel with ID, scouts in uniform free. Cash only.; contact Marge Dobrofsky, 6148 Elm St., Morton Grove, IL 60053, (847)-334-4482; Email: adams9104@sbcglobal.net; Website: www.cgma.rocks

June 2018

1-3—WAUSEON, OHIO: Annual show; State Line Gem & Mineral Society; Fulton County Fairgrounds, 8514 SR108; Fri. 12-6, Sat. 10-6, Sun. 11-4; Adults \$4, Seniors/Students \$3, Children 12 & Under Free; Come join the State Line Gem & Mineral Society at the Fulton County Fairgrounds, in the Junior Fair Building in Wauseon, OH for our 57th Annual Show. We are proud of our show boasting demonstrations, Silent Auction, Door Prizes, Mine Safety Class by Joel Vicary on Saturday, Soap Stone Carving Class by Sandy Cline & homemade food available at reasonable prices. We will be giving demonstrations on Cutting and Shaping Cabochons, Wire Wrapping, Scrimshaw by Don Baker, Flint Knapping, Kid's activities, and GEODE cracking with geodes from Indiana, Morocco, and Mexico. There will be rough material for those who start from scratch, cabs and beads for those who just put there personal touch on their art, and finished pieces for those who just appreciate the finished pieces of jewelry. We hope you'll come and spend the day or the whole weekend with us! We look forward to seeing you there.; contact Glenda Gafner, 3720 S. Britton Hwy, Britton, MI 49229, (517)-403-6310; Email: ggafner@frontier.com; Website: statelinegms.com

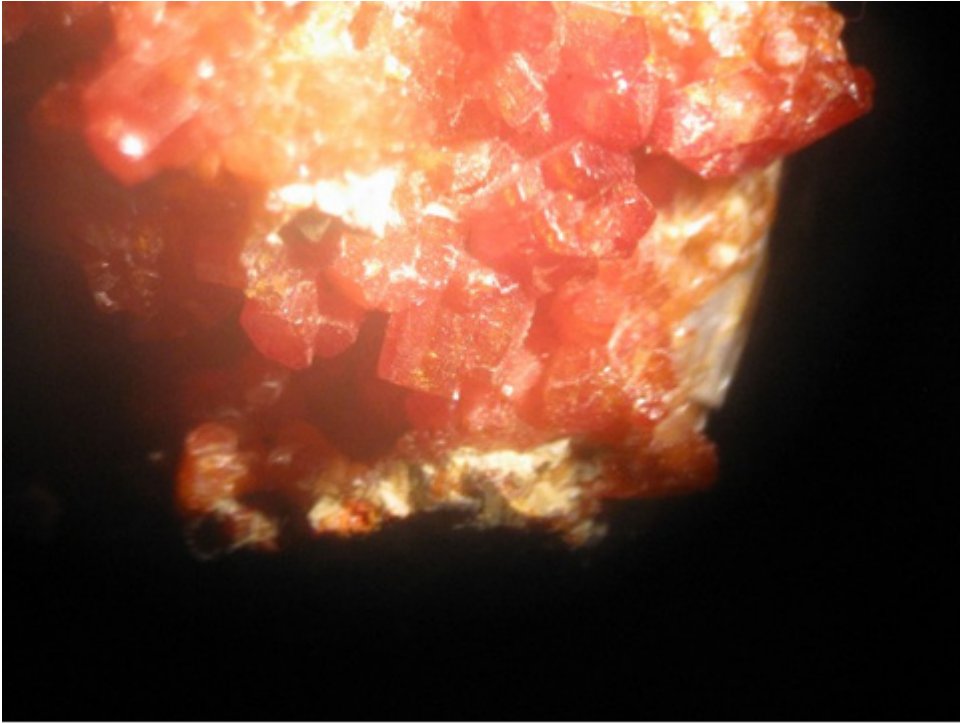
2-3—MARION, KENTUCKY: Annual show; Ben E. Clement Mineral Museum; Fohs Hall, 205 N. Walker Street; Sat. 9-5, Sun. 9-4; Free Admission; Hourly door prizes, silent auctions, vendor tables, Indian artifact display, free children's activities sponsored by Roger's Group, Beading Class at 2PM on Saturday and Sunday (charges apply) and museum tours (regular admission charges apply); contact Tina Walker, P.O. Box 391, 205 North Walker Street, Marion, KY 42064, (270)-965-4263; Email: beclement@att.net; Website: clementmineralmuseum.org

August 2018

10-12—HOUGHTON, MICHIGAN: Annual show; Copper Country Rock and Mineral Club; Portage Township Elementary School, corner of bridge street and jacker ave; Fri. 1-8, Sat. 10-6, Sun. 11-3; Free Admission; Dealers offering fine US and world-wide gems, minerals, fossils, lapidary, mining certificates, jewelry and many more items. Three days of Silent auction of a wide spread of rocks, minerals and assorted other items. Kids can hunt for copper at the show, door prizes, and displays of minerals and artifacts. We have organized digs on August 7,8,9, and no safety training is required. During the week there will be a mining presentation, buffet and silent auctions, and open house at local stores. ; contact norm gruber, 1850 clark street, Marquette 49855-1566, (906)-228-6764; Email: show@ccrmmc.info; Website: <http://www.ccrmmc.info/>

17-19—SOUTH BEND, INDIANA: Annual show; Michiana Gem & Mineral Society; St. Joseph County 4-H Fairgrounds Esther Singer Building, 5117 South Ironwood Road; Fri. 12-7, Sat. 10-6, Sun. 11-5; adults \$3, children 6-12 \$1, under 6 free; contact Joshua Klosinski; Email: klosinsj@mail.gvsu.edu; Website: michianagms.org

Red Cloud Mine continued from page 3



Vanadinite from Red Cloud Mine. Photo: Jim Daly.

Roger said we could also go down into the open pit, but we couldn't drive in. I chose to stay on the dump, but Phil and Bob went down. They reported that there wasn't much to find.

When we finished collecting, Roger showed us some material he had for sale, and we discussed the other mines nearby. He mentioned the Geronimo North, Princess, Black Rock and Silver Glance, all within a mile or so. It was getting late, so we didn't investigate any of these, except to drive by the Silver Glance. We agreed that we'd like to return in cooler weather and look at the other mines then. We were able to negotiate the "road"

through the proving grounds and wildlife refuge in daylight, but it was getting dark by the time we got to Quartzsite, where we said goodbye to Bob, and got a bite to eat before returning to Mesa.



Water tower at the Red Cloud. Graffiti on the tower says, "Ed Over, move over- here we come!" Photo: Jim Daly.