

THE ROCKFINDER

MARCH 1993

	1	2	3	4	5	6
7	8	9	10	11	12	13
14	15	16	17	18	19	20
21	22	23	24	25	26	27
28	29	30	31			



Joyce Larson, Editor
Michiana Gem & Mineral Society
144 Spruce Drive
Westville, IN 46391



MICHIANA GEM AND MINERAL SOCIETY

1993 BOARD OF DIRECTORS

President.....Margaret Heinek	7091 E. East Park Ln., New Carlisle, IN 46552
Vice Pres.....Larry Hess	15358 Kerlin Dr., Granger, IN 46530
Secretary.....Pam Rubenstein	1316 Catherwood Dr., So. Bend, IN 46614
Treasurer.....Sister Jeanne Finske	52700 Shellbark, South Bend, IN 46628
Liaison.....Paul Godollei	1910 Ribourde Dr., So. Bend, IN 46628
Past Pres.....James Russell	27911 North St., No. Liberty, IN 46554

COMMITTEE CHAIRPERSONS

Program.....Larry Hess	15358 Kerlin Dr., Granger, IN 46530
Hospitality.....Irene Ungurait	1267 Kinyon Dr., So. Bend, IN 46616
Educational.....Gordon Dobecki	11900 Laughlin St., Mishawaka, IN 46544
Librarian.....Paul Godollei	1910 Ribourde Dr., So. Bend, IN 46628
Historian.....Bess Wise	1513 Clarendon Ave., Niles, MI 49120
Sunshine.....Molly Elwell	105 No. Ironwood Dr., South Bend, IN 46615
Scholarship	
Display.....Mary Miller	451 S. Illinois St., So. Bend, IN 46619
Publicity.....Dawn Cytacki	1606 E. Madison St., So. Bend, IN 46617
Membership.....Members - and Board of Directors	

The MICHIANA GEM AND MINERAL SOCIETY, a non-profit organization, is affiliated with the MIDWEST FEDERATION OF MINERALOGICAL AND GEOLOGICAL SOCIETIES and with the AMERICAN FEDERATION OF MINERALOGICAL SOCIETIES.

REGULAR MEETINGS

Time: 2:00 p.m. EST	Place: Westminster Presbyterian Church
Fourth Sunday of each month	1501 W. Cleveland Road
June - Field Trip Meeting	South Bend, IN
July - No meeting	West of the St. Joseph River
August - Annual Club Picnic	
December - Date to be announced	
Christmas Party	

DUES

Individual	\$ 6.50 per year
Family	10.00 per year
Junior	2.00 per year

ROCKFINDER STAFF

Editor.....Joyce Larson	144 Spruce Drive, Westville, IN 46391
Co-Editor.....Margaret Heinek	7091 E. East Park Ln., New Carlisle, IN 46552
Staff.....Bob Heinek/Club Members	

All contributions for publication should be in the hands of the Editor (219-785-4382) by the 10th of each month.

Permission is hereby granted to reprint, at any time, items published in the ROCKFINDER provided due recognition is given.

THE ROCKFINDER



VOLUME 33
NUMBER 3

MARCH 1993

PUBLISHED BY:
MICHIANA GEM & MINERAL SOCIETY

MEETING: March 28, 1993
Doors Open - 1:30 p.m.
Meeting at - 2:00 p.m.

PROGRAM: Short Slide program on
Mines, Minerals and Gemstones
of Michigan's Copper Country
-and-
"A SURPRISE!"

PLACE: Westminster Presbyterian Church
South Bend, Indiana
1301 W. Cleveland Road
West of the St. Joseph River

HOSTS: Joe Kossack
Sister Georgia
Sister Jeanne



HAPPY ST. PATRICK'S DAY

-AND-

HAPPY SPECIAL DAYS TO -

- MARCH 3 Stuart Biek
6 Gladys Pacholke
7 Barbara McHugh
8 Joyce Larson
11 Marie Crull
15 Jane Kile
22 Gloria Merrill
22 Jim Cytacki
24 Joe Kossack
27 Kevin Klodzinski
30 Margaret Heinek



- APRIL 3 Ed Miller
4 Jim Russell
5 Stan Kile
8 Janet Landato
16 Fred & Addie Niebauer-Anniversary
21 Jim McHugh
28 Bill Crull
30 Ozzie Kytta

All are birthdays except Fred & Addie!
Many Happy Returns to all!!!!!!!!!!!!!!!!!!!!

BIRTHSTONES FOR MARCH - Aquamarine and Bloodstone



Aquamarine - A transparent beryl that is blue, blue-green or green in color, a beautiful gemstone.

Bloodstone - A green chalcedony sprinkled with red spots resembling blood.



May the road rise up to meet you - May the wind be always at your back - May the sun shine warm upon your face - May the rain fall soft upon your fields - And until we meet again - May Gpd hold you in the palm of His hand. (An Irish Blessing)

MINUTES OF THE FEBRUARY 1993 MICHIANA GEM & MINERAL SOCIETY:

President Heinek opened our regular meeting. Two guests were introduced: Jo Kytta's sister and Marge Collins' mother. A motion was made, seconded, and passed to accept the January minutes as printed in The Rockfinder. The treasurer's report for December, January and February was read and filed for audit.

Committee Reports: By-Laws ---- Margaret is working on updating our bylaws.
Program ---- Marge Collins introduced today's program, a slide show on ivory and scrimshaw. Displays were brought in by Margaret and Bob Heinek, and Pam Rubenstein. Paul Godollei brought in some sponge fossils.
Sunshine --- Get those special dates in to Molly Elwell!
Education -- Our display at Science Alive last week at the public library was a hit. Over 150 children polished Petosky stones! We plan to attend next year but will request more space. Paul Godollei is offering fossil classes - identifying, cleaning, collecting, etc. Call him if you're interested.
Directory -- Larry Hess is preparing our new directory. This year it will include a list of our library materials.

Old Business: We will send \$40.00 to the MWF Endowment Fund to reach 800%. We have not yet purchased a TV or VCR but will soon.

New Business: Pam Rubenstein will take over the U.S. map project that the junior members started with Joyce Larson. Look for more information in this issue of The Rockfinder to see what states we still need samples from. We'd love donations, as that will save the club money because Pam won't have to buy material.

There will be no demonstrations at the South Bend Gem and Mineral Show, but the club has been asked to have a booth. We will also run the Kiddie corner for club profit. Jessie Zeiger and Lou Jordan are in charge of the kiddie corner. Please call them to sign up if you can work.

20 members and 2 junior members were present. Door prizes went to Jo Kytta, Gordon Dobec-ki and Paul Godollei.

The meeting was adjourned at 2:45.

* * * * *

Respectfully submitted,

causes the "tool" to become a "toy" in the child's eyes, and could result in a child starting a serious fire or being severely injured. Matches and lighters are tools for adults.

Pam Rubenstein

* * * * *

BURN PREVENTION TIPS - CIGARETTE LIGHTERS

Studies of very young children suggest that the cigarette lighter has been used as a "spark toy." and children under 22 months of age have started fires by using the lighter this way.

Young children should be instructed to leave matches and lighters alone. If they should find matches or a lighter, they should tell a parent or other care-giver, rather than bring the matches or lighter to the adult (especially for children under five).

Parents must avoid using a cigarette lighter as a "toy" to pacify a child who is crying or causing a disturbance. This

(-via Shriners Burns Institutes)



There was an article in the South Bend Tribune that came from the N.Y. Times on "Lab-Made Fossils Lead to Phosphate Discovery," and in the process have discovered that most of the phosphate required for the fossilization of small animal carcasses comes from the animal itself.

The information will help to understand how fossils formed in the past, thus helping to know which of today's organisms are likely to become soft-tissue fossils in the future. This study is being carried on in the geology department of the University of Bristol in England.

It was known that phosphate must be present in order for some fossils to form. The study revealed that the calcium phosphate that replaces the soft tissue of fossilized animals comes from the animal itself.

The fossils produced in the lab preserved more intricate detail than naturally fossilized soft-tissue animals. It took 25 weeks by manipulating oxygen concentrations in a solution of artificial sea water, yeast extract and a mixture of water and sediment from an estuary. Where no calcium phosphate was added, the soft tissue of shrimp became, at least partly mineralized, from the phosphate in their own bodies.

You might be interested in knowing that the North West Federation Newsletter has picked up several articles from the ROCKFINDER. One being Paul Godollei's article "Fossil Hunting in Florida."

Paul asked if anyone was interested in having a class on identification of fossils at the last meeting. There were several members that signed his paper. If you were not there and would like to attend, let Paul know.

Frogs have it easy, they can eat what bugs them!

(-via Crystal Cluster)

DID YOU HEAR?

A certain rockhound, out in the geode country of Eastern Oregon, one day came upon a rather unusual geode. Wondering about adding it to his collection, he gave it a lick and attempted to wipe off some of the dirt. Suddenly a genie appeared and announced, "I am the Genie of the geode. For being a good rockhound, you may have three wishes."

After thinking a bit, the rockhound said, "I've always dreamed of owning a collection of diamonds, so that's my first wish." Poof...it was done. Then he realized his camping rig was in bad shape, and he wished for a new one with all the trimmings. Poof...it was done. He asked the Genie if he might save his last wish until later and think about it. The Genie nodded and disappeared.

The rockhound placed his treasures in his new rig and started driving down the road, happy as a lark. He flipped on the radio and began to hum along with the music. Soon he absent-mindedly began to sing along with the tune: "OH, I WISH I WERE OSCAR MEYER WIENER"---AND POOF.....

(-via Crystal Cluster, Trinity Trailings, Rockhound Newsletter & The Conglomerate)

The highest gem deposit in the United States is at Mount Antero in the Sawatch Range in Colorado. At an elevation of 14,245, fine crystals of blue aquamarine, smoky quartz, rock crystal and numerous other gems and minerals can be found.

At this height it can only be reached in the summer and it's not easily accessible then. This area has been worked for a century and is now a commercial source of beryllium and the mineral beryl.

(-via GEMS)

SHOWTIME: Gem and Mineral Festival at Rand Park Field House, 2025 Miner Street Des Plaines, IL. April 3-4, 1993

STARFISH in Indiana: by Paul Godollei, club member

The starfish are probably the most easily recognized of the Phylum ECHINODERMA. The arms of many starfish are studded with powerful suction cups like an octopus, so that in feeding the starfish can sieze a mussel or other shelled animal and wrench the shell apart to feed on the soft inner internal parts of its victim. A starfish can extrude its stomach through its mouth to envelope an animal larger than itself! The starfish belong to the class Stelleroidea, and the remains found in Hoosier rocks usually consist of broken pieces with plates and hard parts separated. In the Subclass Asteroidea, the five simple arms are elongations of the central disk, and contain a central groove to force food toward the central mouth. The arms were studded with marginal plates, often studded with spines or other appendages.

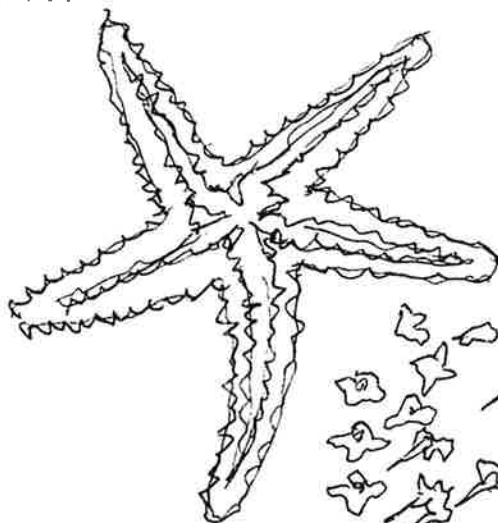
The Subclass Ophiuroidea constitute a group of brittle stars rarely preserved as fossils, but presenting abundant representatives in our modern seas. The arms are thin and contain no food grooves, and serve for locomotion.

In Southeastern Indiana and Southwestern Ohio the species PROMOPALEASTER BELLULUS is found in the Upper Ordovician Richmond Formation in the form of numerous fragments and plates, rarely complete.

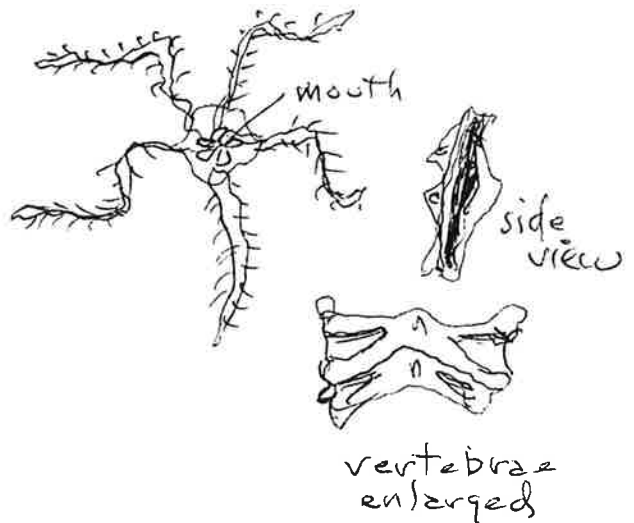
Of the brittle stars, the remains of ONYCHASTER rays and plates have been found in the Mississippian Keokuk formations of Southwestern Indiana.

BIBLIOGRAPHY: Shimer & Shrock - "Index Fossils of North America." P 211 AND PLATE 81
"The Audubon Society Field Guide to North American Fossils" by Ida Thompson P. 707

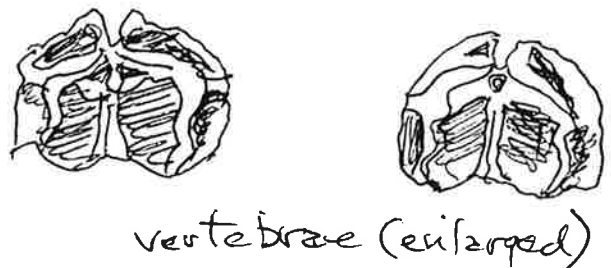
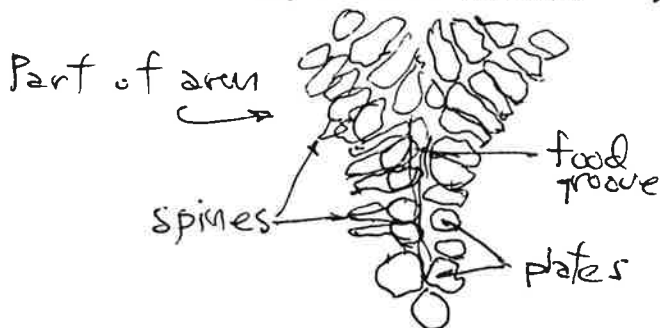
P 707



Promopalaeaster bellulus



Brittle Star-plates and ray fragments



COMMEMORATIVE STAMPS - by Tony Verdi
The AFMS Newsletter, March 1993

For several years I have requested the Postal Service issue a block of four stamps depicting some of our early fossils. In 1974 a beautiful block of stamps showing minerals was issued. In 1989 four prehistoric animals of the Mesozoic Era were issued. In 1992 a second set of four mineral stamps were issued.

Our committee feels that stamps depicting the early, small fossils should be the next step. Common fossils such as ferns, trilobites, crinoids, ammonites and brachiopods should be considered. These could be shown in early reconstructed scenes or as a fossil of today.

The Commemorative Stamps Committee asks that rockhounds and interested collectors of stamps and blocks write to the Postal Service's Citizens Stamps Advisory Committee and request that our fossil heritage be recognized.

Write to: U. S. Postal Service
Citizens Stamps Advisory
Committee
Room 5800
475 L'Enfant Plaza West, SW
Washington, D.C. 20260-6352

Please reproduce this message in regional federation newsletters as well as local club bulletins.

RIB TICKLER

Grandma was preparing early supper for 12-yr. old Adam so he could get to swimming practice on time. Everything was ready when she discovered she was almost out of ketchup. She was thumping away at the end of the nearly empty bottle when the phone rang. "Get that, Adam!" she called to her grandson. He picked up the phone and told the caller, "She can't come to the phone right now. She's hitting the bottle!"

(-via The Rock Rattler)



Indiana OUR HOOSIER STATE
BENEATH US
INDIANA GEOLOGICAL SURVEY, DEPARTMENT OF NATURAL RESOURCES



CRINOIDS: Living Fossils of the Sea

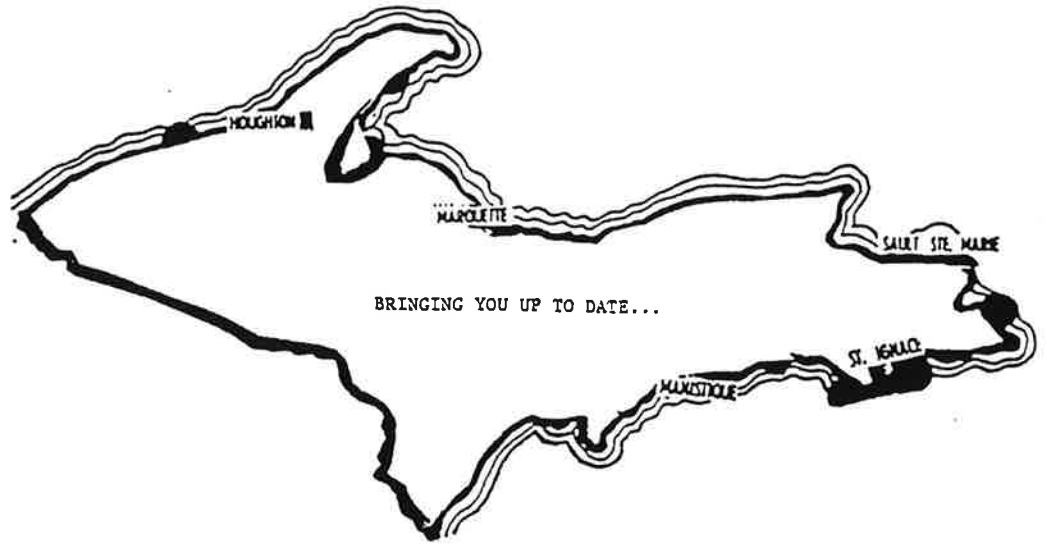
Crinoids, called "Sea Lilies," are marine echinoderms related to starfish and sand dollars. Though they are animals, they resemble plants. The head (crown) is generally raised on a long stem of plate-like discs fastened to the sea floor by a stony, rootlike anchor. There are about 600 species alive today, most of which lack a stem and can move about.

When crinoids die, the skeleton plates tend to fall apart, so complete crinoid heads are highly prized. Many Indiana limestones contain many crinoid stems and plates, locally called "Indian Beads."

Fossil crinoids were discovered long before living ones were noticed. These animals are still important marine life, especially near coral reefs and in the deep sea, but they are not nearly so common as they once were.

**DON'T EVER
GIVE UP**





GOOD FUN. . .GOOD FELLOWSHIP . . . GOOD TIMES . . .
EXCITEMENT

ALL OF THESE await you when you attend the upcoming Field Trip Convention to Upper Michigan . . .

GOOD NEWS . . . The FIELD TRIP CONVENTION and the RED METAL RETREAT will be combined!!!

Here are some of the things you may look forward to...

- | | |
|-----------------------------------|--|
| Cracker Barrel (Panel Discussion) | Entertainment at the Beach (WOW!!!) |
| Scheduled field trips | BBQ |
| Competitive displays | State Directors Meeting |
| 3 days of swapping | Executive Committee meeting & luncheon |
| Silent Auction | Delegates meeting & luncheon |
| Live Auction | Awards Banquet |
| Editor's Breakfast | Shuttle service |
| Red Metal Reports | |

Encourage your club members to come by Greyhound (or mini-bus)...leave the driving up to them. Shuttle service will be available...to and from field trips, malls and other attractions.

DORMITORY HOUSING...\$100.00 per week per person...this includes ROOM & BOARD

Underground collecting at the Caledonia Mine.

Plan to take your BIG SUMMER VACATION in the UP...you can't afford to miss THIS ONE!!!

PRE-REGISTRATION PACKETS WITH ALL THE NEEDED INFORMATION WILL BE MAILED TO ALL CLUBS (two copies to each club) about the 1ST OF MARCH.

Marve
MWF NEWSLETTER
February 1993

* * * * *

JUST FOR FUN: A patient confessed to her physician that she had first consulted a fortune teller, a faith healer, and a palm reader. "And what foolish advice did they give you?" asked the doctor. Came the wry answer: "They all told me to see you." (via Smoke Signals)

WINTER FUN FOR ROCKHOUNDS: (Maybe if I print this spring will FINALLY make an appearance)

Here are a few suggestions for things to do during the long evenings and weekends when the snow and bitter cold keep you housebound:

Start the tumbler (you've been meaning to do it for weeks).

Clean your slab or trim saw. That could keep you busy for a long time.

Organize your workbench. Ugh - close your eyes and point to a starting place.

Make some jewelry or rock "critters" out of tumbled stones.

Sort and clean material collected on last year's field trip (and the one the year before that). Put some of it in a box for the club show, grab bags, or silent auctions.

Read through the lapidary magazines you've been putting in a pile month after month.

Get your field trip equipment ready for spring. While the guys are sharpening chisels and checking equipment, the gals can sew simple rock bags. Use sturdy polyester or heavy cotton to make the bags with ties at the top. Even material from old slacks or jean legs are good to use.

You snow birds who "flew" south for the winter, see all the fun you've been missing. For the rest of us, THINK SPRING!"

(-via Smoke Signals)

BREAKFAST BREAD PUDDING

- 1 - 16 oz. loaf sliced, firm white bread
- 1/4 - cup (1/2 stick) butter
- 3 - cups sliced, peeled, tart apples
- 2 - tablespoons all-purpose flour
- 8 - tablespoons sugar, divided
- 1/2 - cup raisins
- 1 - teaspoon ground cinnamon
- 4 - eggs, lightly beaten
- 4 - cups lowfat milk
- 1/2 - teaspoon salt

Trim crusts off bread slices, cut slices into 1/2-inch cubes (about 6 cups); set aside. Preheat oven to 300 degrees. Butter a 9-inch square baking dish; set aside. In a medium skillet heat butter until melted. Add apples; cook, stirring occasionally until tender, about 5 minutes. In a cup combine flour and 2 tablespoons of sugar; stir into apple mixture; cook and stir until mixture thickens, about 1 minute. Stir in raisins and cinnamon, spoon apple mixture into prepared pan. Layer reserved bread cubes over apples. In a medium bowl, mix eggs, milk, salt and remaining sugar; pour over bread cubes. Using a spoon, press down bread cubes

to absorb milk. Cover and refrigerate overnight (or bake immediately).

Bake until golden brown and a knife inserted in the center comes out clean, a about 1 hour 30 minutes - 1 hour 15 minutes if baked immediately. Serve warm with grilled Canadian bacon, if desired.

Yield: 6 portions
Per Portion: 510 calories, 16 grams protein, 15 grams fat, 285 milligrams calcium.

NOTE: This issue is one page short due to separate enclosures.

IN APRIL ISSUE: Watch for Catherine McHugh's report on her TRIP TO TEXAS. Such a traveler!

