

MAY 1991

# THE ROCKFINDER



Margaret Heinek  
Michiana Gem & Mineral Society  
7091 E. East Park Ln.  
New Carlisle, IN 46552

**FIRST CLASS MAIL**

LARSON, JOYCE  
144 Spruce Drive  
Westville, IN 46391

Midwest Federation  
Convention  
Hosted by The Michiana Gem & Mineral Society  
August 30-31-Sept. 1, 1991  
South Bend, IN

MICHIANA GEM AND MINERAL SOCIETY

1991 Board of Directors

President....Margaret Heinek	7091 E. East Park Ln., New Carlisle, IN46552
Vice Pres....Bob Miller	1106 Clayton Dr., South Bend, IN 46614
Secretary....Marie Crull	17651 Bryan St., South Bend, IN 46635
Treasurer....Sister Jeanne Finske	Basil 2, St.Mary'sCollege, Notre Dame,IN46556
Liaison.....Paul Godollei	1910 Ribourde Dr., South Bend, IN 46628
Past Pres....James Russell	27911 North St., North Liberty, IN 46544

Committee Chairpersons

Program.....Bob Miller	1106 Clayton Dr., South Bend, IN 46614
Hospitality..Irenne Ungurait	1267 Kinyon Dr., South Bend, IN 46616
Educational..Gordon Dobecki	11900 Laughlin St., Mishawaka, IN 46544
Librarian....Paul Godollei	1910 Riboure Dr., South Bend, IN 46628
Historian....Bess Wise	1513 Clarendon Ave., Niles, MI 49120
Field Trips..Board of Directors	
Safety.....Bob Heinek	7091 E. East Park Ln, New Carlisle, IN 46552
Sunshine.....Kathy Miller	1106 Clayton Dr., South Bend, IN 46614
Scholarship	
Display.....Mary Miller	451 S. Illinois, South Bend, IN 46619
Publicity....Dawn Cytacki	1606 East Madison St., South Bend, IN 46617
Membership...Members and Board of Directors	

The MICHIANA GEM AND MINERAL SOCIETY, a non-profit organization, is affiliated with the MIDWEST FEDERATION OF MINERALOGICAL AND GEOLOGICAL SOCIETIES and with the AMERICAN FEDERATION OF MINERALOGICAL SOCIETIES.

Regular meetings

Time: 2: PM EST	Place: Westminster Presbyterian Church
Fourth Sunday of each month	1501 W. Cleveland Road
June- Field trip meeting	South Bend, Indiana
July- No meeting	West of St. Joseph River
August- Annual club picnic	
December- Date to be announced- Christmas party	

Dues

Individual	\$ 6.50 per year
Family	10.00 per year
Junior	2.00 per year

Rockfinder Staff

Editor and Co-Editor...	
Joyce Larson	144 Spruce Drive, Westville, IN 46351
Margaret Heinek	7091 E. East Park Ln, New Carlisle
Staff.....Bob Heinek	
Club Members	

All contributions for publication should be in the hands of the editor by the 10th of each month.

Permission is hereby granted to reprint, at any time, items published in the ROCKFINDER, provided due recognition is given.

# THE ROCKFINDER

VOLUME 31

NUMBER 5

MAY 1991

PUBLISHED BY: MICHIANA GEM AND MINERAL SOCIETY - SOUTH BEND, IN

## REGULAR MEETING

SUNDAY, MAY 26, 1991

TIME: DOORS OPEN 1:30  
MEETING 2:00

PLACE: WESTMINISTER PRESBYTERIAN CHURCH  
1501 W. CLEVELAND ROAD  
WEST OF THE ST. JOSEPH RIVER  
SOUTH BEND, IN

PROGRAM: RANCHO LE BREA TAR PITS  
SLIDE PROGRAM

HOSPITALITY: MARIAN FIEGE  
JANET LANDATO  
PAM RUBENSTEIN

## OH, THOSE EDITOR'S BLUES

via Scribe and Beehive Buzzer 11/89

I'd like to write a story of the big  
geode you found,  
And the friendly campsites and stories  
that abound,  
Of your trips to far off places and the  
famous folks you've met  
But all there is to fill these pages is  
the news I didn't get.

What's new at the ol' diggings? Does  
that polish really shine?  
Have you tried a new location? Have you  
visited the mines?  
I'm not after your gold nuggets, as I  
sadly sing the blues.  
My heart is bleeding printer's ink as I  
beg YOU for some news.

via The Rocky Reader

\*\*\*\*\*

## COMING EVENTS

PERU, IN June 8 & 9  
4-H Fairgrounds

TRAVERSE CITY, MI June 22 & 23  
Northwestern Mich. College

NEW MEMBER: Stanley Jacobs  
9307 W. Pahs Rd.  
Michigan City, In 46360

EMERALD - BIRTHSTONE FOR MAY

HAPPY BIRTHDAY TO ALL WHO HAVE  
BIRTHDAYS IN MAY AND  
HAPPY ANNIVERSARY

SEE MARGARET'S COLUMN



MARGARET'S COLUMN

## Happy Memorial Day:

Have a nice time, enjoy your family and if you can, visit the Chicagoland show, either Saturday or Monday. But come to our meeting on Sunday May 26th.

I have made arrangements for a June field trip. The Michiana Society members have been invited to visit the ITC Corp in Shelby, MI on June 2. This company manufactures CZs.

We will have to car pool, so if you plan on going, take someone with you and let them share the gas. It is about 25 miles north of Muskegon. The route is 31 north, to the Shelby exit, turn right for  $\frac{1}{2}$  mile, left at the sign for the plant. The road is 'curvy' for about 1 mile to the next sign for the plant. The address is 1330 Industrial Dr., Shelby MI. The ride will be about 150 miles and should take about 3 hours from South Bend. We should be there by 11 o'clock their time (10 our time), so plan on leaving early enough so you won't have to rush. The owner and his wife are planning to be our hosts, show us the plant, the sales room and will take us on a tour of the area where the rough CZs are stored. I am looking forward to this trip, and I am sure you will enjoy it.

But I must know how many plan on going, as I told Mrs. Kelly I would hope to have 20 there. It has been a long time since we have done anything like this, so please plan on going. I am going to contact some other clubs in the area to see if they would like to join us.

I was able to get some more material, and I will have some cut out for those who ordered them. I will try to have more for others that want the vests.

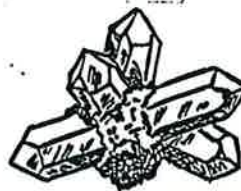
The raffle tickets are ready for you to start selling them, so please pick some up at the meeting. I was offered a double strand of pearls for the sale, this will not be on the ticket, among other items offered to me. We have a busy 2 or 3 months ahead of us getting all the loose ends tied up.

See you at the meeting. The program is a good one...the Tar Pits in California.

CRINOIDS were flower-like animals that lived in the prehistoric seas. They were scavengers with voracious appetites. They not only ate the bodies of dead organisms, but they attacked and ate their associates. They lived in immense "gardens" and geologists believe that this appetite is the reason why most crinoidal limestones are practically devoid of any other fossils.

Discovery via The Glacial Drifter  
(Ks & Mi.)

\* \* \* \* \*



To clean quartz or amethyst crystals, cover with fresh vinegar and allow to stand overnight to remove carbonates such as calcites, barite and lime. Repeat if necessary. Wash well; place in washing type of ammonia for 8 to 12 hours. Boiling these crystals in rhubarb stalks (a powerful source of oxalic acid) in a pyrex dish will achieve the same results. Water or a solution of baking or washing sodas will neutralize the acid.

(from many bulletins  
via "GEM'N'I" 4/91)

Editor's note: Barite is not a carbonate, but is a sulphate. According to "Gemstone & Mineral Data Book" by John Sinkankas, barite is attacked only by concentrated sulfuric acid. It can be cleaned with other acids and would not be affected by vinegar.

We plan to try cleaning our recently acquired chalcedony roses by this method as soon as we get enough rhubarb from the garden. We'll report when the results are in.

## MINUTES OF THE APRIL 1991 MEETING

President Heinek opened the meeting at 2:00 PM at the Westminister Ch.

A motion by Addie Niebauer to accept the minutes of the Mar. meeting, as printed in the ROCKFINDER, seconded by Bob Miller, passed.

No Treasurer's report was given.

Margaret displayed a clipping of Father Calhoun and his fenceing class in Calif.. He sent his regards.

A letter from Lapidary Journal with the information that the August Convention will be listed in the April Buyer's Guide, was read.

Mary Miller reported her mother was back in the hispital and then will be in the nursing home for a while. Our thoughts are with Mary.

All show packets were sent, and reports are back that they have been received. Bob and Margaret have spent a lot of time on them, and a big thanks go to them.

Gifts for the 1991 raffle are being received, and anyone wanting to donate a nice item, contact Margaret. Raffel tickets will be sold at the entrance to the show. Volunteers are needed, but if you are asked to work, please say YES. PLEASE!!! Shirley Toney is handling the non-competitive displays, Ann Cook in Ohio is in charge of the competitieve display.

Orders for patches and pins for the members and show, are being ordered. Please let Margaret know if you are interested in purchasing them.

Kathy Miller passed out pins to all who did not have one from the 1986 show/convention. Kathy urged as many as possible to attend the banquet dinner on Sat. night of the show. We would like to have a good showing of members. Contact Marie

Crull or Margáret for tickets to the meals.

Ed Miller will be delegate for the club and Pam Rubenstein alternates, at the MWF Delegates meeting.

May 11th the Midwest Faceters will hold a meeting at the Wildwood in Michigan City. Margaret asked anyone if they wanted to attend the dinner and meeting to contact her for details.

Bill Crull was wished a happy birthday.

The club insurance has been taken care of, and we have a new agency, Allied Ins. Agency.

Joyce Larson was thanked for the good job she is doing with the ROCKFINDER and especially with the Juniors page.

Phyllis Smallwood donated a new book to the library. She also gave several agate slices to be used at the show on the silent auction. Thanks Phyllis.

Bill Crull displayed rocks from the phosphate mine in Florida where he had had a special tour. Bob and Kathy Miller showed slides and pictures taken on their trip to Switzerland in Mar.

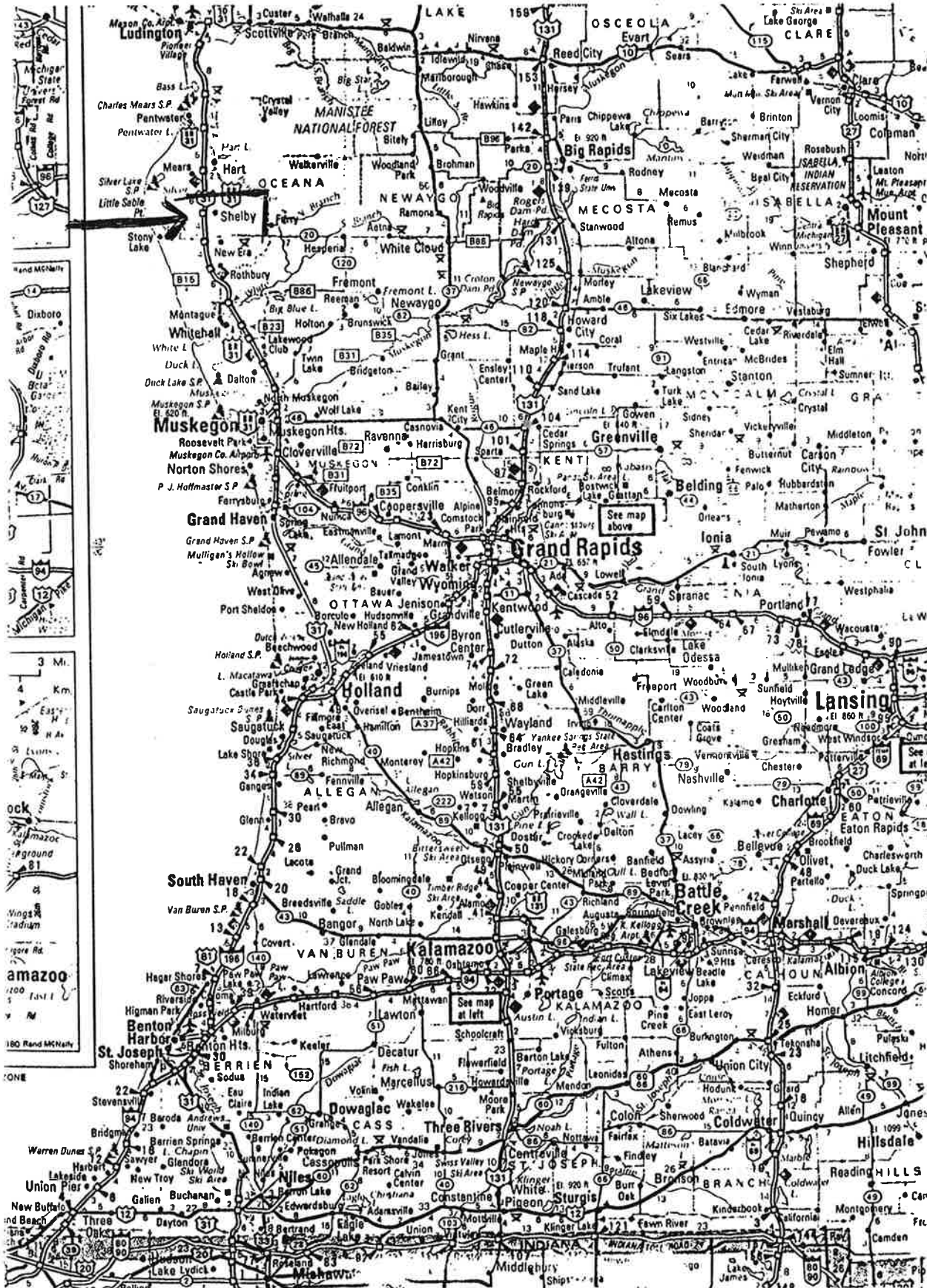
Vests were cut out for some of the members, (until the material ran out) More will be purchased, and will be cut out for those who do not have one. We would like to see all members wearing them to aid our guests in identifying the members.

Hostesses were : Ed and Marsha Miller and Phyllis Smallwood.

Door prizes were awarded to Junior member Alex Rubenstein, Jessie Zeiger, Viola Robinson, Pam Rubenstein and Margaret Schultz.

Please make the following changes in your directory: Charlotte Erickson, 1709 Bate Ave, Davis Cal 95616; Larry Calhoun in Canogo Park, CA.; Stanley Kyle is KILE (sorry);.

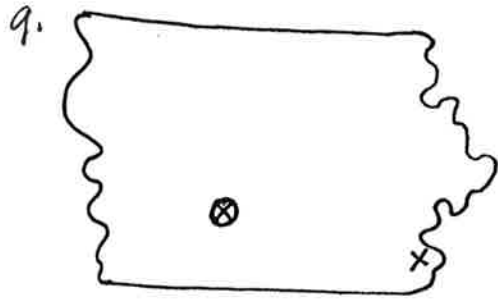
32 members present. Marie Crull, Sec.



*Michigan  
Gem Society.*

*June  
Field Trip  
June 2, '91*

*ICI Inc.  
Factory  
where  
CLs are  
made.  
1330 Industri  
Dr.  
Shelby,  
Mi.*



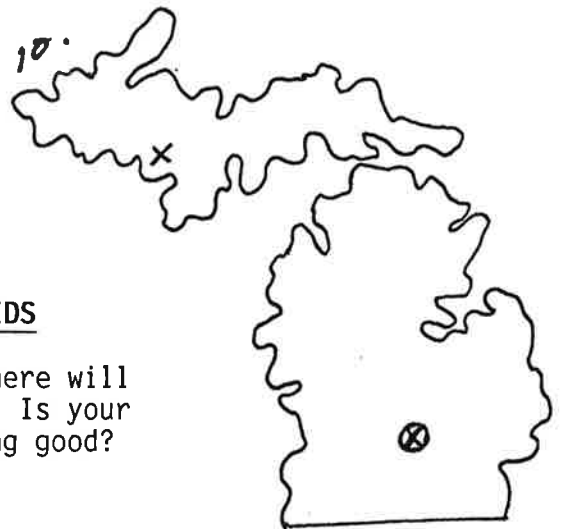
State \_\_\_\_\_

Capital \_\_\_\_\_

Specimen SEEDOG

C'MON KIDS

Next month there will be 5 states! Is your poster looking good?



State \_\_\_\_\_

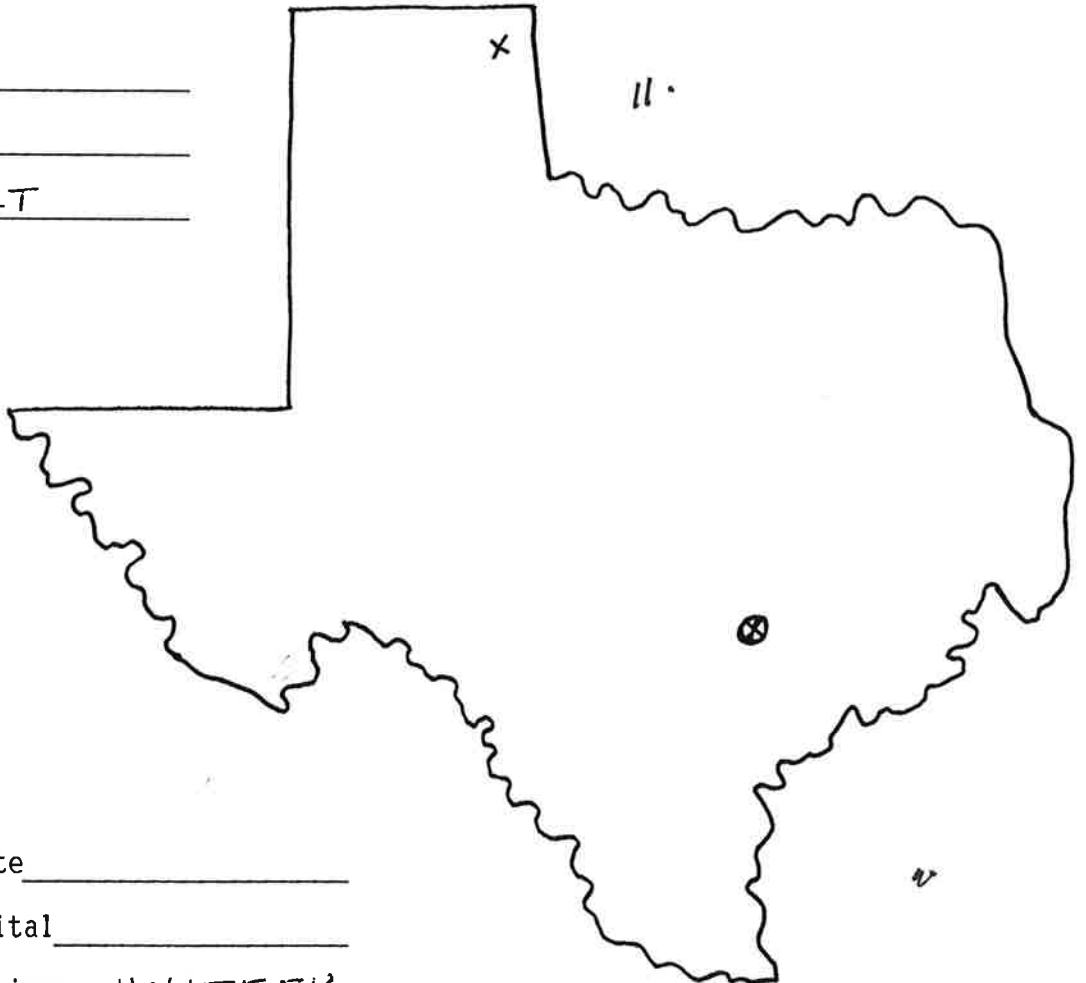
Capital \_\_\_\_\_

Specimen PROCEP

State \_\_\_\_\_

Capital \_\_\_\_\_

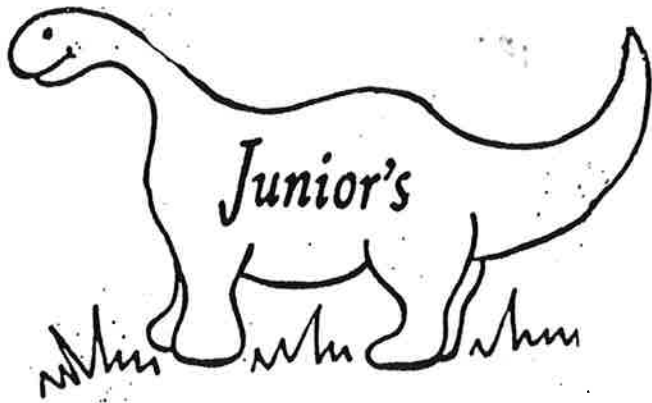
Specimen CALT



State \_\_\_\_\_

Capital \_\_\_\_\_

Specimen UNITEEK



### THE PALEONTOLOGY PRESIDENT

Thomas Jefferson, 3rd president of the U.S., was a man with many passions: democracy, education, freedom, mammoths. Mammoths? Yes, mammoths - and other extinct Ice Age creatures, too.

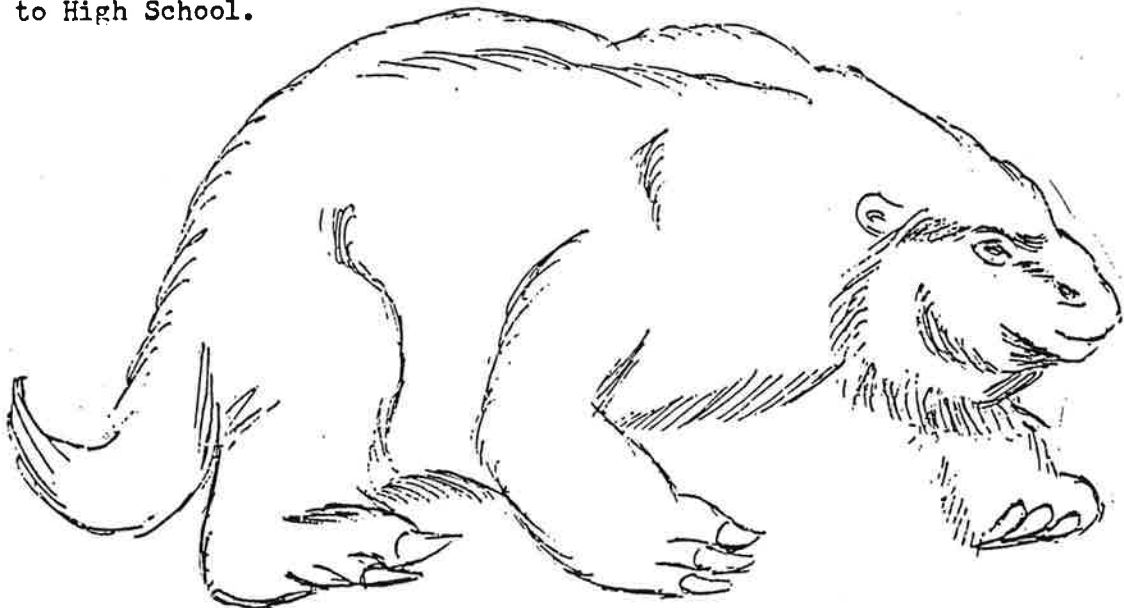
An avid amateur paleontologist, Jefferson played a major role in founding the young science of paleontology in the United States. He collected and studied a variety of vertebrate fossils; it's been said that no other field of natural history was more interesting to him.

Besides studying bones of giant sloth found in a limestone cave in the Virginia's Blue Ridge Mountains, Jefferson studied mammoths, because of their size, were a great fascination to him. While in his second term as president, he sent Colonel Clark (of Lewis & Clark fame) on a fossil hunt to the Ohio River in search of mammoth remains. He was not disappointed.

Colonel Clark shipped great quantities of fossil bones back to Washington. President Jefferson donated most to museums, but kept a few to display in his personal cabinet at Monticello. He did not believe that the mammoths and giant sloths he studied were extinct. Rather, he theorized that these creatures still roamed, undiscovered, somewhere in the great frozen northland - far beyond the American frontier.

Thomas Jefferson will live forever in the study of paleontology, for an American mammoth species, *Mammuthus Jefferson*, was named in his honor. Via Korn Krib News, 1/91. From a book by Prairie River Press, P. O. Box 641, Merrill, Wisconsin 54452. This publication has many books listed such as FOSSIL, BIRDWATCHING, DINOSAURS, ROCKS & MINERALS, ROCK COLLECTIONG ROCK QUARRY BOOK, COMETS, ROCKS IN SPACE. Prices from \$2.95 to \$17.95 for ages 4 to High School.

Thomas Jefferson will live forever in the study of paleontology, for an American mammoth species, *Mammuthus Jefferson*, was named in his honor. Via Korn Krib News, 1/91. From a book by Prairie River Press, P. O. Box 641, Merrill, Wisconsin 54452. This publication has many books listed such as FOSSIL, BIRDWATCHING, DINOSAURS, ROCKS & MINERALS, ROCK COLLECTIONG ROCK QUARRY BOOK, COMETS, ROCKS IN SPACE. Prices from \$2.95 to \$17.95 for ages 4 to High School.



EREMOTHERIUM was a giant ground sloth that lived in the middle and southern part of the United States and South America. Eremotherium was as big as an elephant. In other ways it looked just like the sloth you see at the zoo today. It had shaggy fur and long, curling claws on its feet. Eremotherium used the claws for digging and pulling tree branches down close to its mouth to eat leaves.



A rare crustacean: by Paul Godollei, club member.

While reading an article about Fauna of the Silica Formation from near Sylvania, Ohio, in 1969, I read about a fascinating group of arthropods that had been discovered in the North Quarry of the Medusa Portland Cement Company in the quarry dumps. Remains of one of the genera, *Rhinocaris* had been described in the article, and another named *Echinocaris* had also been described.

I was able to go there in 1970 looking for the trilobite *Phacops* and other specimens to fill out my collection of Silica shale fossils that I had collected on two previous trips there. After obtaining permission at the cement company office, I headed for the North Quarry. There were cars from all over the U.S. in the parking lot-the word had gotten out.

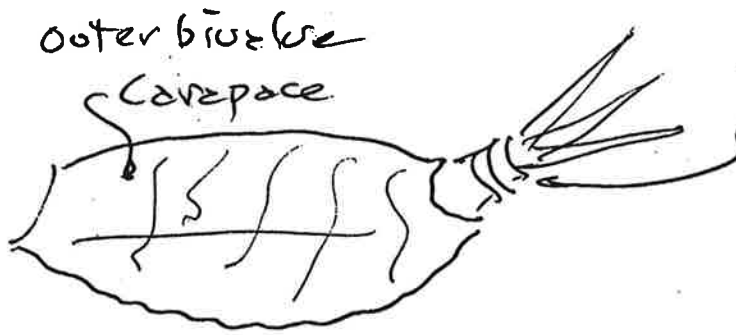
I stopped at a big pile of bluish shale that had been excavated and dumped there recently and picked up a large chunk and split it open with my chisel and rock hammer-imagine my surprise when a perfect specimen of *Phacops* was revealed -it was over 3 inches long!

After splitting rocks for a couple of hours longer and finding nothing, I moved over to a weathered pile of shale near the edge of the water and picked up several pieces and turned them over-I soon found several pieces of limestone with traces of thin iridescent film on them that looked like the elusive arthropod described in the article. Most were so incomplete that identification of the species would be impossible. Then I found an imprint with three lateral spines on it that identified it as the tail of an arthropod. I collected several other pieces. and wrapped them carefully in newspaper. Further research showed them to be slightly different than *Echinocaris* or *Rhinocaris*-they looked more like *Colpocaris* in the Shimer and Shrock book-Index Fossils of North America. The animal had a segmented body that extended beyond the shield or carapace and ended with three lateral spines at the tail. It belongs to the Order CERATIOCARINA in the Subclass ARCHAEOSTACEA of the Class CRUSTACEA.

This is what makes fossil collecting exciting!

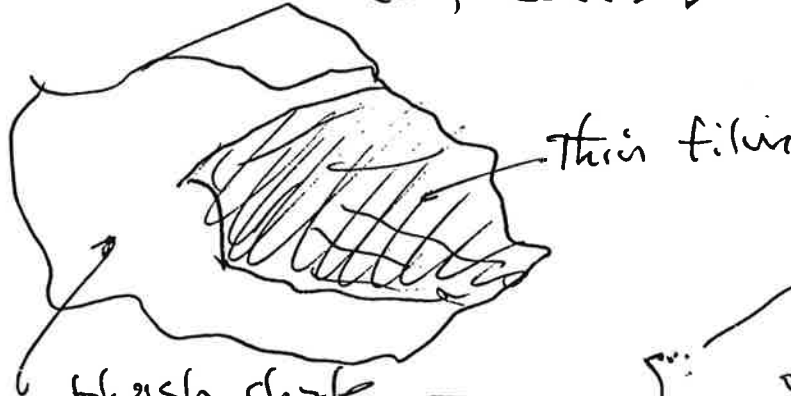
Bibliography: 1.Shimer and Shrock'-:North American Index Fossils :pp 657-Plate 279

2. Fossils of the Mid-Continent of North America:;pub by Earth Science, Downer's Grove, Ill.-Fossil Fauna of the Silica Formation by Cecilia E. Dulik pp. 39-40



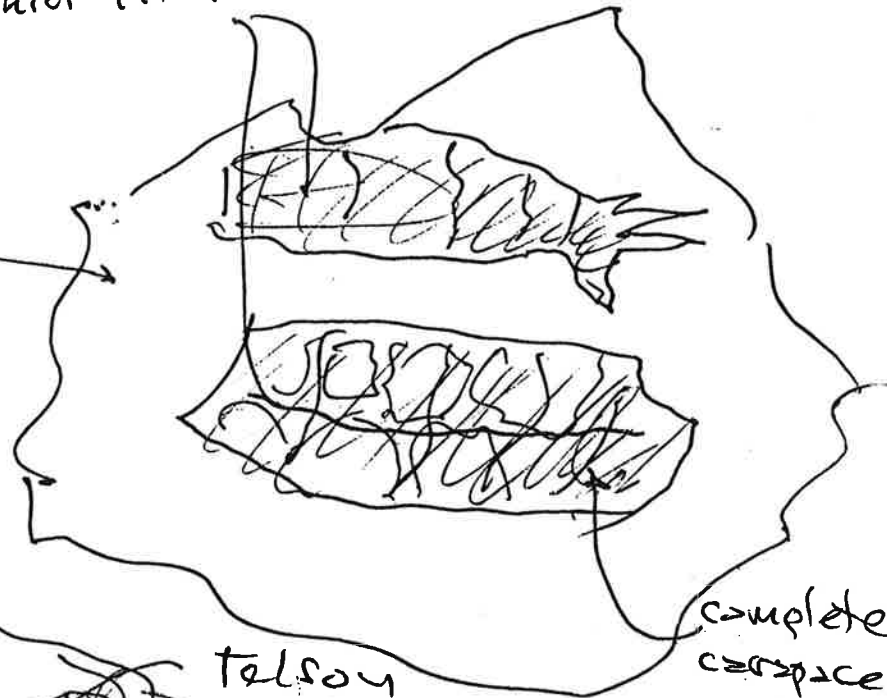
Bivalve with telson  
and 3 spines  
what a complete specimen  
would look like  
Colpocaris?

Specimen with  
irredecent filum  
showing spines



bluish shale

Broken specimen  
showing front half  
of carapace



both halves of  
bivalve open carapace

